



extra4.com

Werkzeuge für die Etiketten-Fertigung
Our tools for production
Nos outils pour la production



Inhaltsverzeichnis

Content

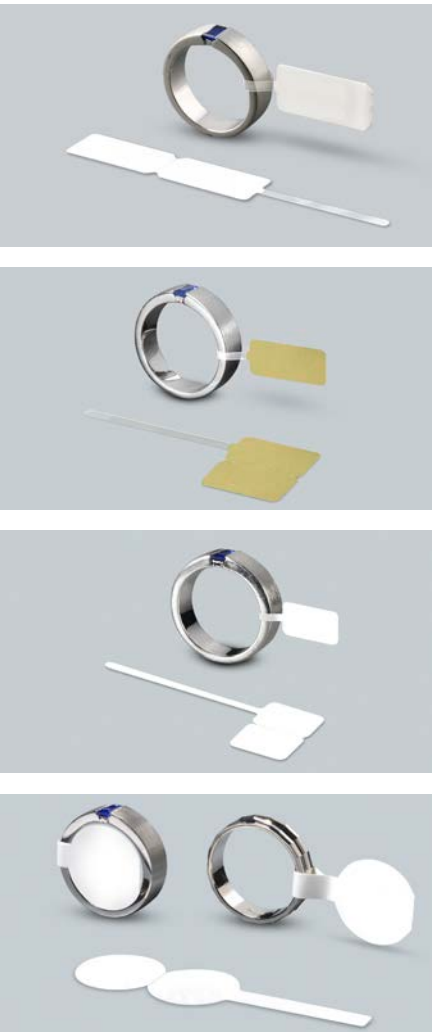
Contenu


3	Schlaufen-Etiketten	Labels with loop	Étiquettes avec lanière
29	Hantel-Etiketten	Dumbbell labels	Étiquettes d'haltères
39	Faden-Etiketten	Labels for threads	Étiquettes à fil
47	Etiketten für Ketten	Labels for chains	Étiquettes pour chaînes
54	Etiketten für Ohringe	Labels for earrings	Étiquettes pour boucles d'oreilles
56	Etiketten für Perl-Schnüre	Labels for pearl-strings	Étiquettes pour perles
57	Form-Kombinationen	Combinations	Combinaison
63	Etiketten für Schreibgeräte	Labels for writing utensils	Étiquettes pour outils pour écrire
64	Card-Etiketten für Zertifikate	Card Labels for certificates	Cartes de certificats
65	Etiketten für Uhren	Labels for watches	Étiquettes pur montres
73	Brillen-Etiketten	Labels for glasses	Étiquettes pour lunettes
79	Haftetiketten	Adhesive labels	Étiquettes adhésives

Schlaufen-Etiketten

Labels with loop

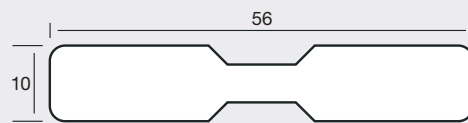
Étiquettes avec lanière



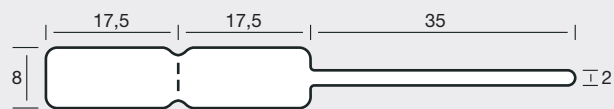
- B** Anzahl Bahnen |
Number of rows |
Nombre de poses
- BB** Bahnbreite |
Width of row |
Largeur de la bande
- T** Etikettenvorschub (Zoll) |
Label feed (inch) |
Avance des étiquettes (pouce)
-  Klassische Etiketten für die manuelle
Beschriftung | Classic labels for
writing on by hand | Étiquettes clas-
siques pour inscription manuelle
- *** Mit durchgestanzten Löchern |
With punched holes |
Avec des trous entièrement percés



44 1056/PE 



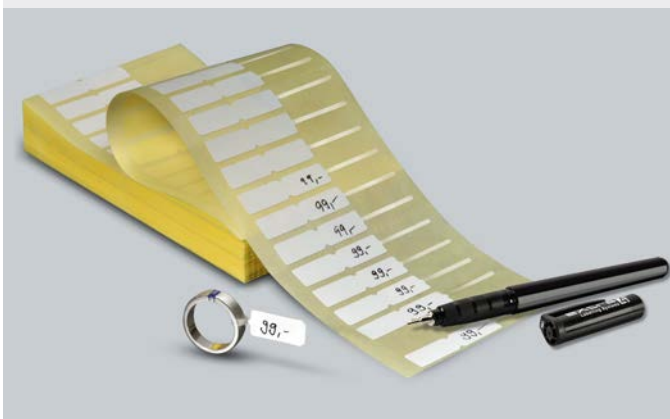
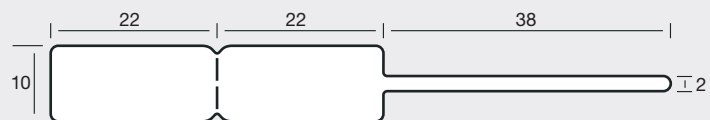
44 870 XHB 



44 1072 XHB 



44 1082 XHB 

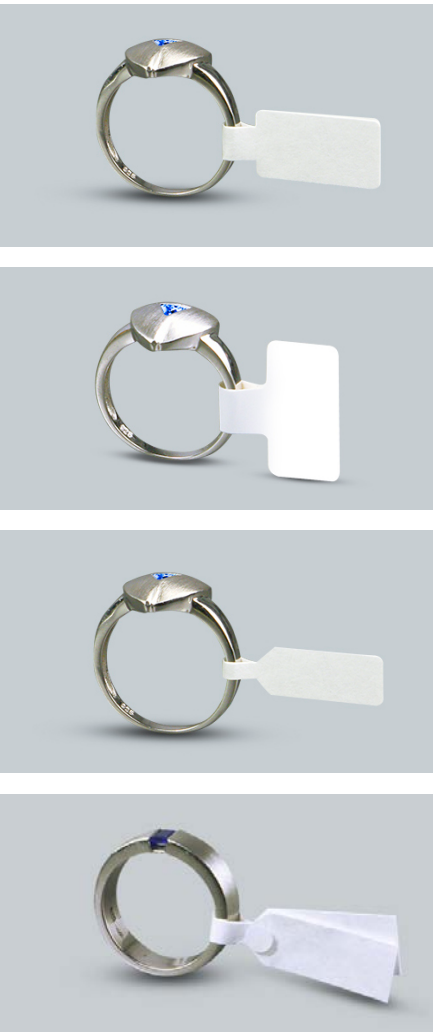



Im Polybeutel in Lagen gefaltet |
in plastic bag, folded in layers |
dans sachet plastique, plié en couches

Hantel-Etiketten

Dumbbell labels

Étiquettes d'haltères



- B** Anzahl Bahnen |
Number of rows |
Nombre de poses
- BB** Bahnbreite |
Width of row |
Largeur de la bande
- T** Etikettenvorschub (Zoll) |
Label feed (inch) |
Avance des étiquettes (pouce)
-  Klassische Etiketten für die manuelle
Beschriftung | Classic labels for
writing on by hand | Étiquettes clas-
siques pour inscription manuelle
- *** Mit durchgestanzten Löchern |
With punched holes |
Avec des trous entièrement percés



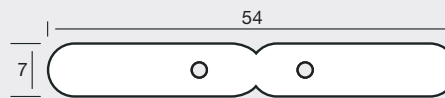
72 107K* 



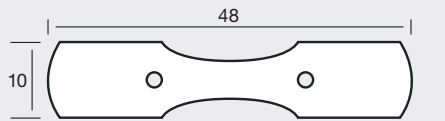
72 81K* 



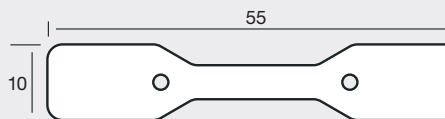
72 82K* 



72 486K* 



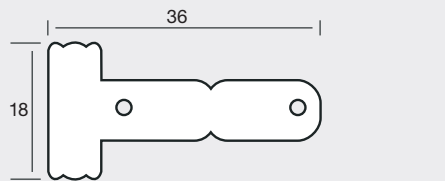
72 D255K* 



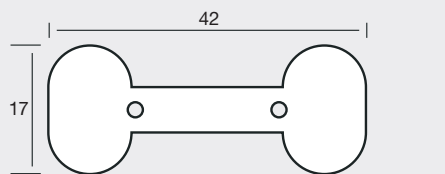
72 D258K* 



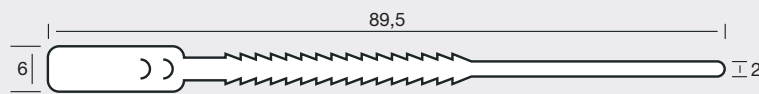
72 367L1* 



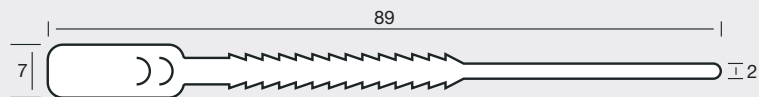
72 369L* 



72 D305V[®] 



72 D306V[®] 

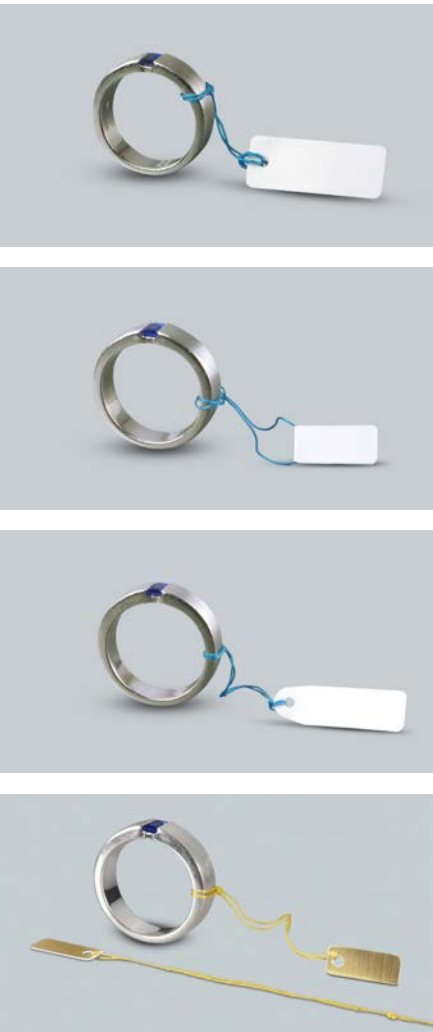



[®] langfristige Verfügbarkeit nicht gesichert

Faden-Etiketten

Tags, labels for threads

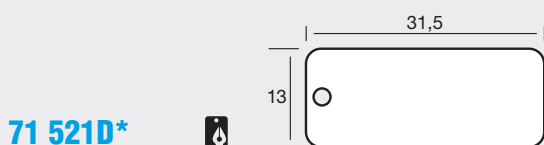
Étiquettes à fil



- B** Anzahl Bahnen |
Number of rows |
Nombre de poses
- BB** Bahnbreite |
Width of row |
Largeur de la bande
- T** Etikettenvorschub (Zoll) |
Label feed (inch) |
Avance des étiquettes (pouce)
-  Klassische Etiketten für die manuelle
Beschriftung | Classic labels for
writing on by hand | Étiquettes clas-
siques pour inscription manuelle
- *** Mit durchgestanzten Löchern |
With punched holes |
Avec des trous entièrement percés

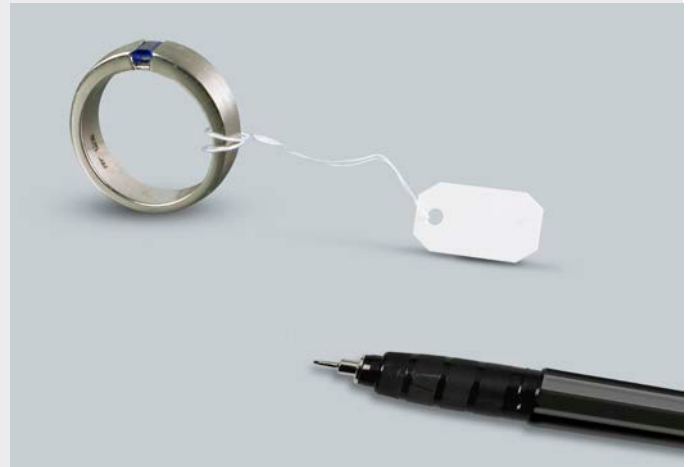


Mit Faden, eingeknotet, nutzbare Länge 6 cm |
With cotton thread, knotted, usable length 6 cm |
Avec fil de coton, noué, d'une longueur utile de 6 cm

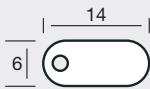




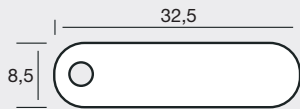
Mit Faden, eingeknotet, nutzbare Länge 6 cm |
With cotton thread, knotted, usable length 6 cm |
Avec fil de coton, noué, d'une longueur utile de 6 cm



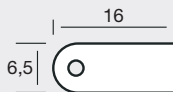
71 175A*



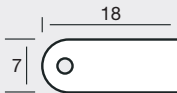
71 756C*



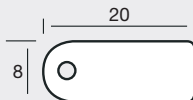
71 D116A*



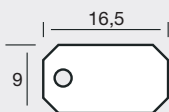
71 D118A*



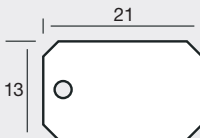
71 40A*



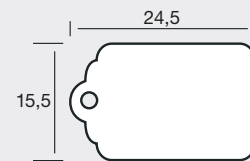
71 93A*



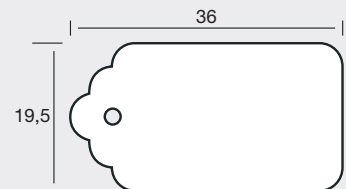
71 43C*



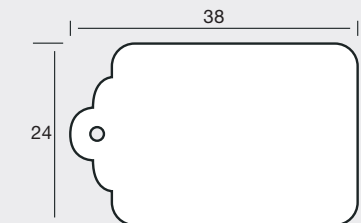
71 25C*



71 385D*



71 44E*



Etiketten für Ketten

Labels for chains | Etiquettes pour chaînes


Etiketten für Ohrringe

Labels for earrings | Etiquettes pour boucles d'oreille


Etiketten für Perl-Schnüre

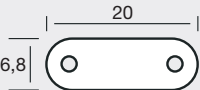

Labels for pearl-strings | Etiquettes pour perles

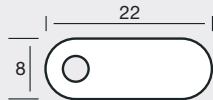



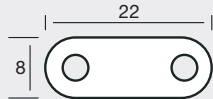

- B** Anzahl Bahnen |
Number of rows |
Nombre de poses
- BB** Bahnbreite |
Width of row |
Largeur de la bande
- T** Etikettenvorschub (Zoll) |
Label feed (inch) |
Avance des étiquettes (pouce)
-  Klassische Etiketten für die manuelle
Beschriftung | Classic labels for
writing on by hand | Etiquettes clas-
siques pour inscription manuelle
- *** Mit durchgestanzten Löchern |
With punched holes |
Avec des trous entièrement percés

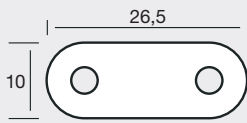



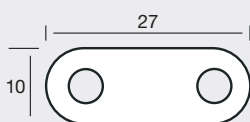

- 73 D420F*** 

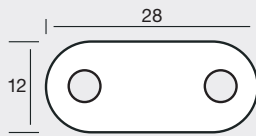


- 73 89F*** 

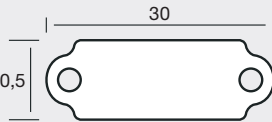


- 73 143F*** 

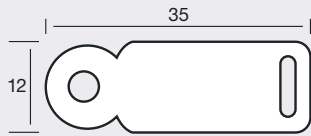

- 73 D424G*** 



- 73 88G*** 

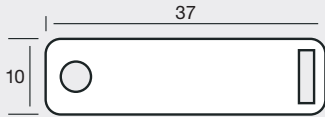


- 73 460/2G*** 

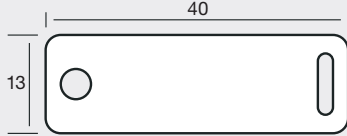


- 73 377/2G*** 

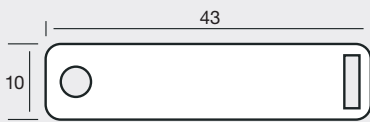


- 73 116/2G*** 

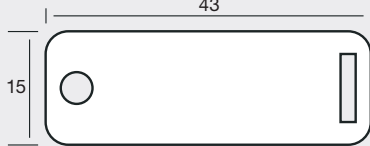


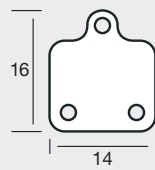
- 73 33/2G*** 


- 73 31/2G*** 

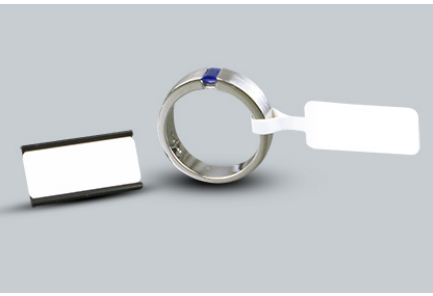

- 73 30G*** 


- 73 62G*** 





74 528/3N* 



Form-Kombinationen

Combinations | Combinaisons

Etiketten für Schreibgeräte

Labels for writing utensils | Etiquettes outils pour écrire

Schmuck-Zertifikate

Card Labels for certificates | Cartes de certificats



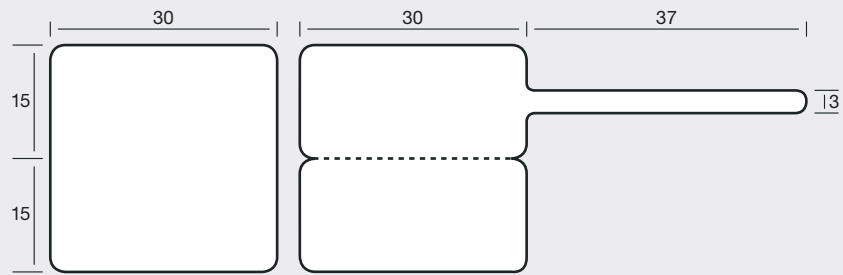
- B** Anzahl Bahnen |
Number of rows |
Nombre de poses
- BB** Bahnbreite |
Width of row |
Largeur de la bande
- T** Etikettenvorschub (Zoll) |
Label feed (inch) |
Avance des étiquettes (pouce)



Klassische Etiketten für die manuelle
Beschriftung | Classic labels for
writing on by hand | Etiquettes clas-
siques pour inscription manuelle

*

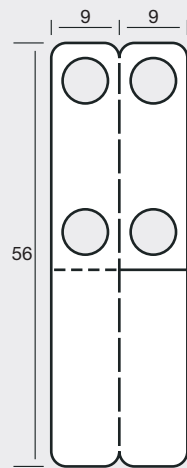
Mit durchgestanzten Löchern |
With punched holes |
Avec des trous entièrement percés



46 30100

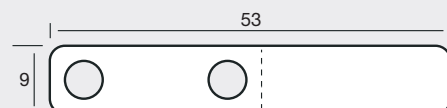
B = 1, BB = 130 mm, T = 12/9"

Etiketten für Schreibgeräte | Labels for writing utensils | Etiquettes pour outils pour écrire



35 1856*

B = 1, BB = 70 mm



73 539*



Stand: 05-2023



Ferdinand Eisele GmbH

Carl-Benz-Str. 17 | 75217 Birkenfeld/Germany
Tel. +49 7231 9479-0 | info@extra4.com
www.extra4.com

